



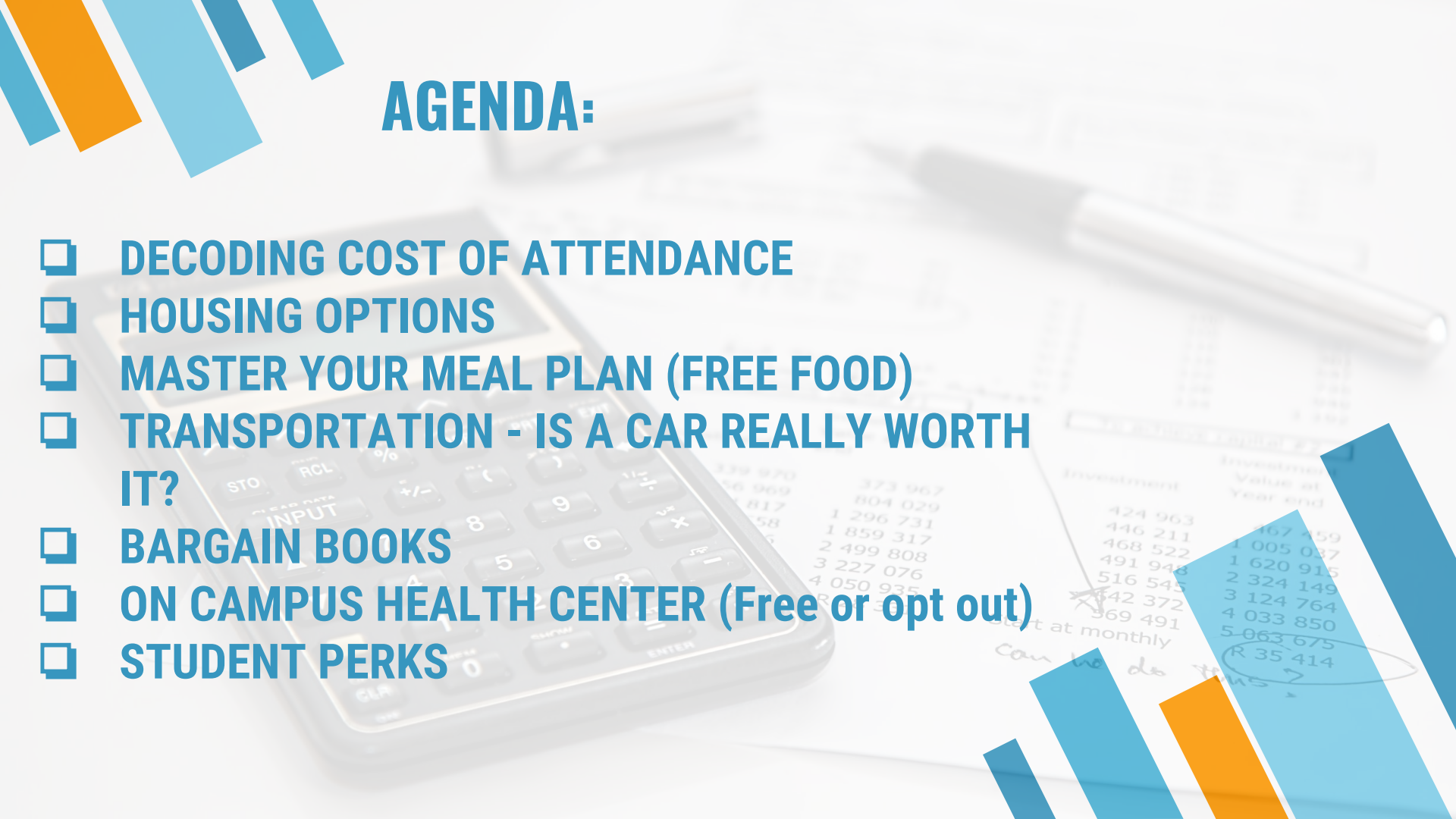

**COLLEGE MAKING IT
HAPPEN**

**SMART STUDENT
BUDGETING**





AGENDA:

- ❑ DECODING COST OF ATTENDANCE
 - ❑ HOUSING OPTIONS
 - ❑ MASTER YOUR MEAL PLAN (FREE FOOD)
 - ❑ TRANSPORTATION - IS A CAR REALLY WORTH IT?
 - ❑ BARGAIN BOOKS
 - ❑ ON CAMPUS HEALTH CENTER (Free or opt out)
 - ❑ STUDENT PERKS
- 
- 
- The background image shows a calculator, a pen, and a financial spreadsheet. The spreadsheet has columns for 'Investment' and 'Investment Value at Year end'. Handwritten notes include 'can we do this?' and a circled value 'R 35 414'.
- | Investment | Investment Value at Year end |
|------------|------------------------------|
| 424 963 | 467 459 |
| 446 211 | 1 005 037 |
| 468 522 | 1 620 915 |
| 491 948 | 2 324 149 |
| 516 545 | 3 124 764 |
| 542 372 | 4 033 850 |
| 569 491 | 5 063 675 |
| | R 35 414 |

DECODING COST OF ATTENDANCE: SDSU

Estimated Cost of Attendance	Living with Parents	On Campus	Off Campus
Tuition & Fees	\$7,460	\$7,460	\$7,460
Housing & Meals	\$4,316	\$15,966	\$12,761
Books & Supplies	\$1,854	\$1,854	\$1,854
Transportation	\$1,542	\$1,494	\$1,919
Personal Expenses	\$1,450	\$1,450	\$1,450
Estimated Cost of Attendance for CA Residents	\$16,622	\$28,224	\$25,444

Tuition is the only item that does not change regardless if a student lives on/off campus or with their parents.

Everything else are considered estimates, meaning there's **money that can be saved!**

DECODING COST OF ATTENDANCE: UCSD

Estimated Cost of Attendance	Living with Parents	On Campus	Off Campus
Tuition & Fees	\$13,672	\$13,672	\$13,672
Housing & Meals	\$4,861	\$12,545	\$10,131
Books & Supplies	\$1,521	\$1,521	\$1,521
Transportation	\$1,686	\$814	\$1,632
Personal Expenses	\$2,050	\$1,598	\$1,949
Estimated Cost of Attendance for CA Residents	\$23,790	\$30,150	\$28,905

Tuition is the only item that does not change regardless if a student lives on/off campus or with their parents.

Everything else are considered estimates, meaning there's **money that can be saved!**

Housing Options





At Home

- Most affordable but only available if attending a local college.





On Campus

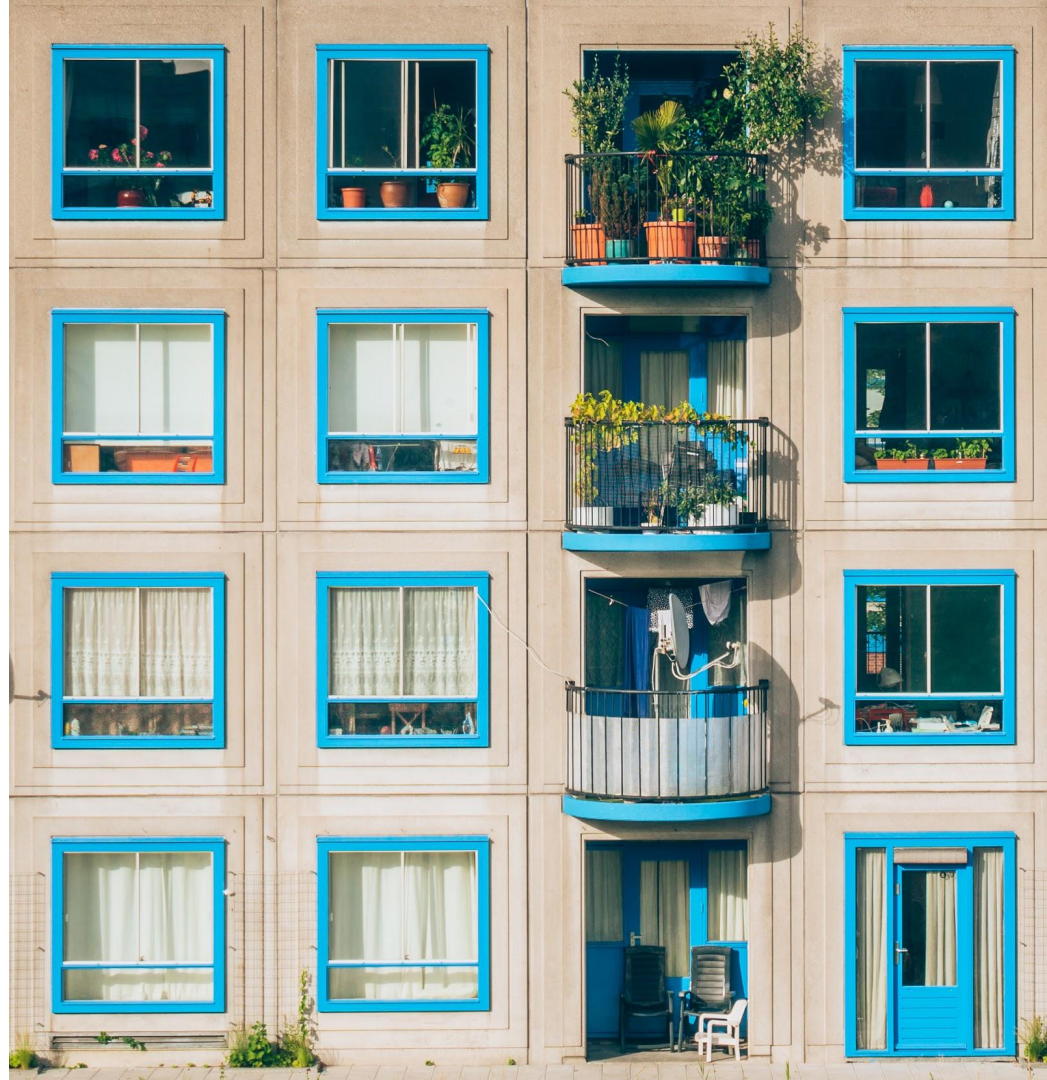
- Dorm
- Apartment
 - Single= Expensive Option
 - Double
 - Triple= Cheapest Option
- RA (Resident Advisor)

Free room and board at most schools!



Off Campus

- Often times students can find cheaper housing options in surrounding areas.
- Find a roommate!





Potential Savings On Housing

Living at Home VS Living on Campus



= **\$7,784**

Whoa! That's a big number!







Master Your Meal Plan

- ☐ Know how much \$ you have for the day / semester.
 - ☐ Make friends with people that have a meal plan!
 - ☐ Attend events that have free food!
 - ☐ Buy non perishable items to keep in your apartment
 - ☐ Cook with friends
- 
- 



Transportation Tips

- 
- ☐ Don't bring a car freshman year
 - ☐ Use campus shuttle
 - ☐ Rideshare (Uber, Lyft)
 - ☐ Bike - save \$ and get some exercise!
 - ☐ Sign up for alerts for airline sales for flights home during holidays.
 - ☐ Carpool home during breaks / holidays
- 

How to save money on textbooks



Bargain Books

Required?

Ask your professor if your book is required

Library?

Check if book is available to check out at your library or request from another library

Buy Used?

You can buy used books online or at the bookstore

Rent

Newer option, but you must return book in good condition

Older Edition

Sometimes your professor will allow you to use an older edition of the required book

Share Books

Create a study group or team up with another person and share your book





Student Health Center

- ☐ Included with Fees
 - ☐ Low Cost or Free Health Services
 - ☐ Opt out if you have health care with parents to save \$
- 
- The background features a blurred image of a calculator and financial documents. The calculator is a standard handheld model with a numeric keypad and function buttons. The documents appear to be investment or financial statements, with columns for 'Investment' and 'Value at Year end'. Some numbers are visible, such as 424 963, 446 211, 468 522, 491 948, 516 545, 542 372, 569 491, 467 459, 1 005 037, 1 620 915, 2 324 149, 3 124 764, 4 033 850, 5 063 675, and R 35 414. There is also a handwritten note 'Start at monthly' and a circled 'R 35 414'.



STUDENT PERKS!

STUDENT DISCOUNTS ARE OFFERED AT MANY PLACES:

- ❑ MOVIES
- ❑ CAR INSURANCE
- ❑ AMAZON PRIME
- ❑ TECHNOLOGY (APPLE, DELL)
- ❑ MUSEUMS
- ❑ FEDEX
- ❑ DISCOUNTED PRINTING ON CAMPUS

THANKS!



Any questions?